

ONE STORY TYPICAL FOOTING

$\frac{1}{2}'' = \text{SCALE}$

(PER: TABLE 18-1-C 2001 C.B. CODES)

"CHAPTER 1806.0 COMPLETE COMPLIANCE WITH SECTION"

NOTE # ANY CRIPPLE WALL FRAMING SHALL COMPLY TO C.B.C 2320.11.5 2001 TITLE #24.

NOTE # ZONE 1, 2, 3 = $\frac{1}{2}''$ BOLT / ZONE 4 = $\frac{5}{8}''$ BOLT
6 FEET MAX. SPREAD OF BOLTS @ $\frac{1}{2}''$ MINIMUM BOLT DIAMETER WITH A MINIMUM OF 7" EMBEDMENT
2" X 2" X $\frac{3}{16}''$ FLAT WASHER WITH NUT.

"EARTH CLEARANCE"
MINIMUM 12" TO GIRDER BOTTOM. (NOT TO SCALE)

P.T. LUMBER OR BETTER MINIMUM 2 BOLTS EACH WITH 12" A FEET OR LESS THAN SEVEN BOLT SIZES FROM EACH END.

6" MINIMUM EARTH CLEARANCE

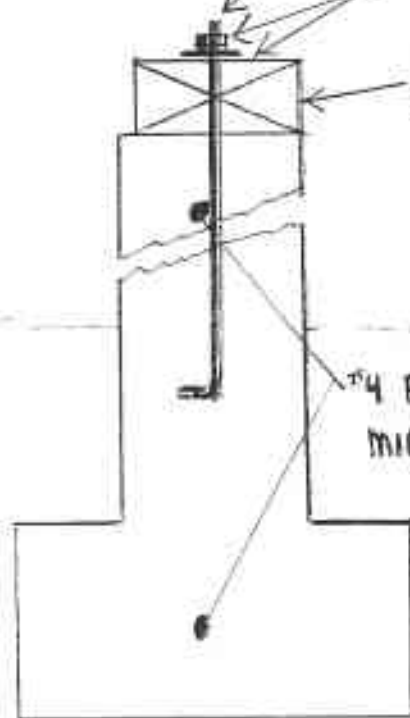
"FROM WALL" 2% SLOPE MINIMUM

6" MINIMUM

#4 REBAR MINIMUM

6" - MINIMUM

MINIMUM DEPTH BELOW UNDISTURBED GROUND



6" MINIMUM THICKNESS OF WALL

12" MINIMUM WIDTH OF FOOTING